

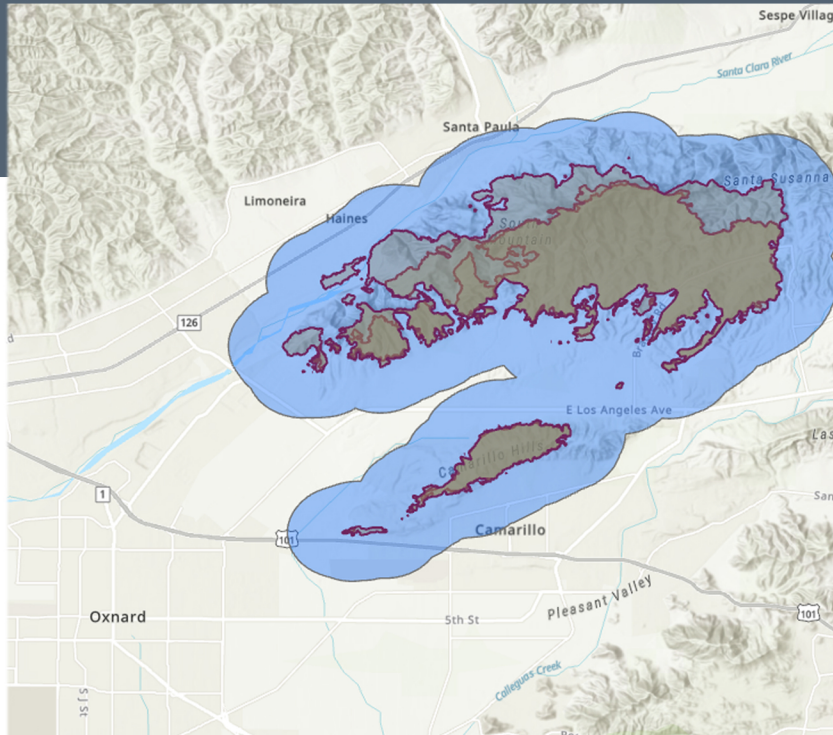


POPULATION PROFILE

MOUNTAIN Incident



Area: 71.07 square miles



30,669

Population

11,270

Total Households

2.70

Avg Size of Household

5.5%

Unemployment Rate

43.1

Median Age

24,018

Household Has Internet Access

10,063

Household Owns Computer

WORKFORCE

26,548

Daytime Population

2,331

Veteran Total

1,022

Total Businesses

9,986

Total Employees

9,680

White Collar Workers

2,136

Blue Collar Workers

1,675

Service Workers

AT RISK POPULATION



3,028

Households With Disability



7,272

Population 65+



511

Households Without Vehicle



School Enrollment

363

Nursery & Preschool

554

Kindergarten

1,354

Grade 1-4

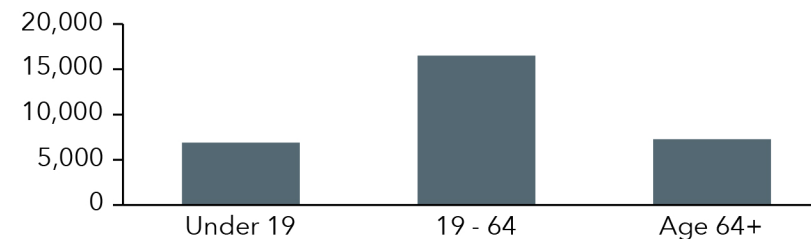
1,263

Grade 5-8

1,516

Grade 9-12

POPULATION BY AGE



Year Structure Built

Built: 2020/Later	4
Year Built: 2010-2019	1,101
Year Built: 2000-2009	993
Year Built: 1990-1999	1,298
Year Built: 1980-1989	1,442
Year Built: 1970-1979	2,470
Year Built: 1960-1969	2,580
Year Built: 1950-1959	990
Year Built: 1940-1949	232
Year Built: 1939 or Earlier	337

2018-2022 Heating Fuel

Utility Gas	7,947
Tank/LP Gas	333
Electricity	2,014
Oil/Kerosene	1
Coal/Coke	0
Wood	11
Solar Energy	90
Other Fuel	27
No Fuel	324

Language Spoken	Age 5-17	18-64	Age 65+	Total
English Only	3,463	12,091	5,843	21,397
Spanish	924	3,441	618	4,983
Spanish & English Well	903	2,774	451	4,128
Spanish & English Not Well	21	445	99	565
Spanish & No English	1	222	68	291
Indo-European	91	698	196	985
Indo-European & English Well	91	660	179	930
Indo-European & English Not Well	0	38	8	46
Indo-European & No English	0	0	9	9
Asian-Pacific Island	106	611	409	1,126
Asian-Pacific Isl & English Well	106	460	360	926
Asian-Pacific Isl & English Not Well	0	152	45	197
Asian-Pacific Isl & No English	0	0	4	4
Other Language	76	265	84	425
Other Language & English Well	76	249	84	409
Other Language & English Not Well	0	16	0	16
Other Language & No English	0	0	0	0